

- Quick mounting.
- Semi-recessed and recessed mounting.
- No condensation.
- Quick and simple maintenance.
- Designed for working with no filter.
- Filter is optional for severe environments.
- ALUZINC structure: rust free for more than 600 hours in saline fog.

Models	Voltage Frequency	Version (V)	Compliance	Certification on demand
MKP1117C*\$	3~ 400V 50 Hz 3~ 460V 60 Hz	7	CE	

On demand: Different voltage; Stainless steel(AISI304) cover; Special painting.

(V) 7 = Electronic thermostat + alarm signal + door open checking device.

(\$) I = Recessed mounting

(\$) S = Semi-recessed mounting.

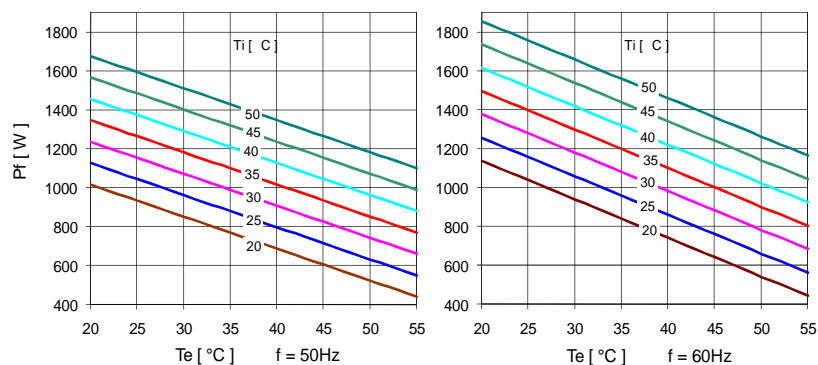
(\$) O = External mounting.

(*) H = high temperature

Available accessories	Filter kit / Spare filter set	See reference sheet
	Kit Display	
	Dissipator of condensation	
	Kit Remote Control	

Operating voltage ±10%	Voltage	I rated	I start-up	Protection fuse	MCA
	3~ 400V 50 Hz	2,3 A	6,9 A	T8 A	
	3~ 460V 60 Hz	2,9 A	8,5 A	T8 A	4 A

Technical data		Frequency 50/60 Hz	
Cooling power	A35-A35	1,1 / 1,2 kW	[3754 / 4095 Btu/h]
	A50-A35	0,85 / 0,9 Kw	[2900 / 3071 Btu/h]
Absorbed electrical power	A35-A35	1,2 / 1,4 kW	
	A50-A35	1,4 / 1,7 kW	
Energy efficiency EER	A35-A35	0,9 / 0,8	
Fan flow rate	ext. cabinet	860 / 900 m3/h	
	int. cabinet	570 / 620 m3/h	
Cooling gas		R134a	
Max pressure		2,4 MPa	[348 psi]
Temperature range: setting 35°C [95 F]	ext. cabinet	20 ÷ 55 °C	[68 ÷ 131 F]
	int. cabinet	20 ÷ 50 °C	[68 ÷ 122 F]
Noise level		67 dB(A)	
Weight		50 kg	[110,2 lb]
Continuous duty		100%	
Protection standard	ext. Cabinet	IP 34	
	int. cabinet	IP 55	
Standard colour	Embossed	RAL 7035	
Power connection		Connector	
Dimensions Recessed / Semi-recessed and External mounting	W x H x D	495x1640x162 mm	[19,49x64,57x6,38 in]
Installation environment		Indoor	



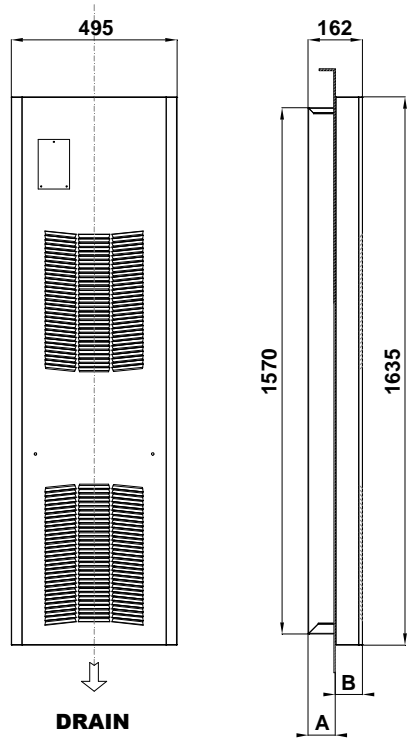
WALL MOUNTED MODEL

1100 W



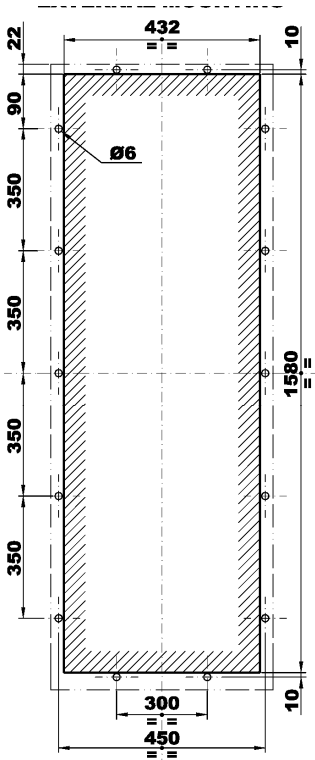
RECESSED—SEMIRECESSED— OUTSIDE
MOUNTING (O-S-I)

Dimensions



WALL MOUNTED MODEL

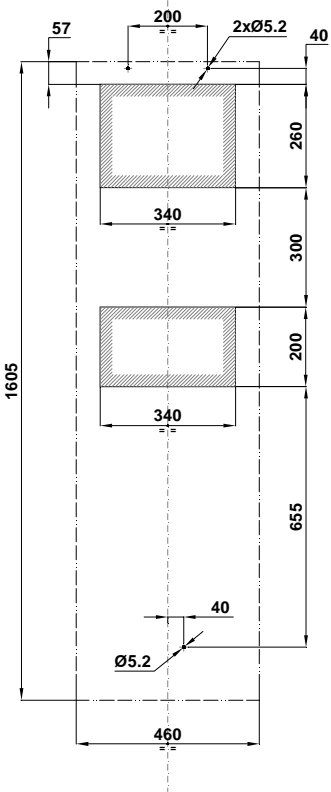
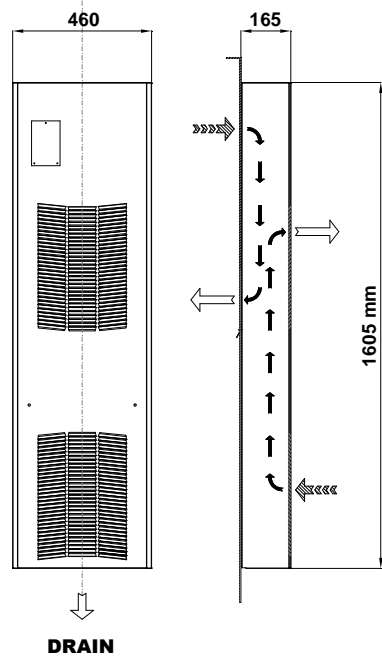
Mounting cut-out



EXTERNAL MOUNTING (E)

Mounting cut-out

Dimensions



1 mm = 0.03937 "
1 " = 25.4 mm

Version =	O	S	I	E
A(Inside enclosure) =	29 mm	81	141	0
B(Outside enclosure) =	133 mm	81	21	165